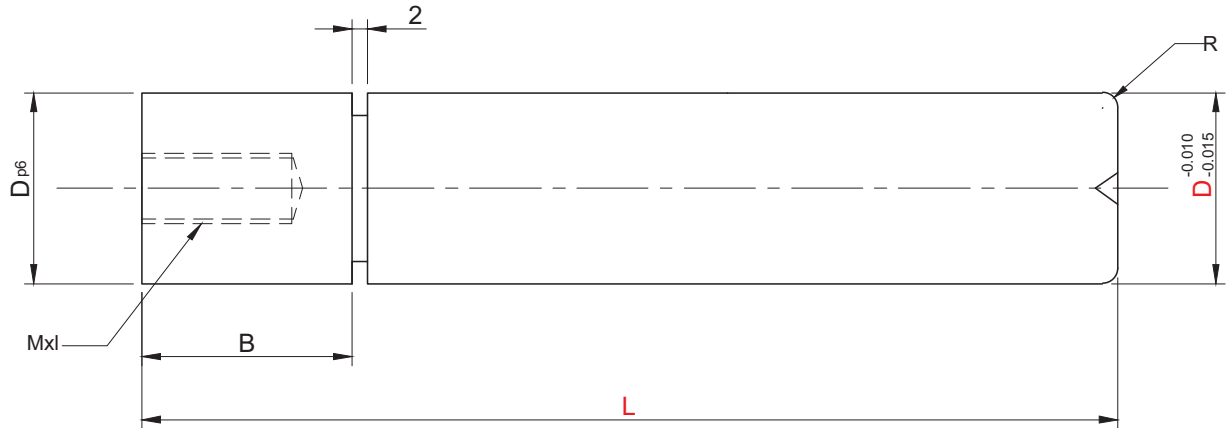


## ► Stripper Guide Pin - PSPN



**Material :-** 20 MnCr5 / En353  
**Hardness :-** 55-58 HRC



Type	Dp6		M x I Pitch	R	B	D	L
PSPN	8	(+0.024) (+0.015)	M5x12 P0.8	1	10	8	40 50 60 70 80
	10				13	10	40 50 60 70 80 90 100
	13	(+0.029) (+0.018)	M6x15 P1	1.5	16	13	40 50 60 70 80 90 100 110 120
	16				20	16	50 60 70 80 90 100 110 120
	20	(+0.035) (+0.022)	M8x20 P1.25	2	25	20	60 70 80 90 100 110 120 130 140
	25				28	25	70 80 90 100 110 120 130 140

**Order Type :-** Code X D X L  
**Example :-** PSPN X 20 X 100